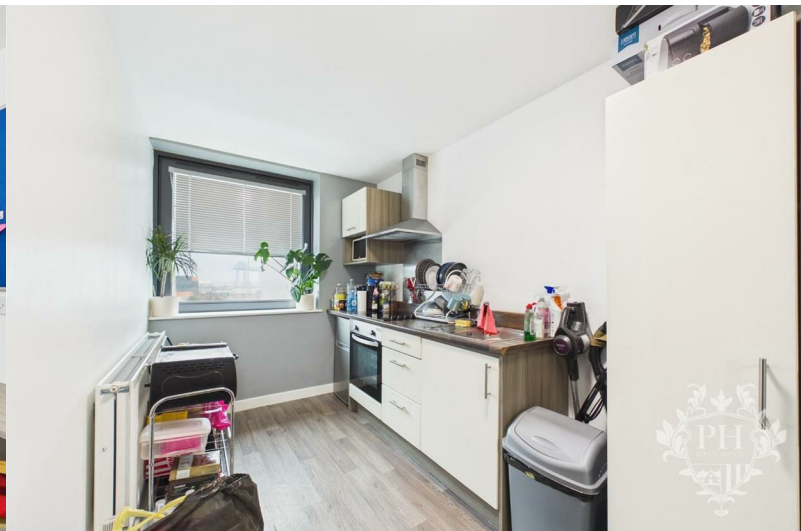
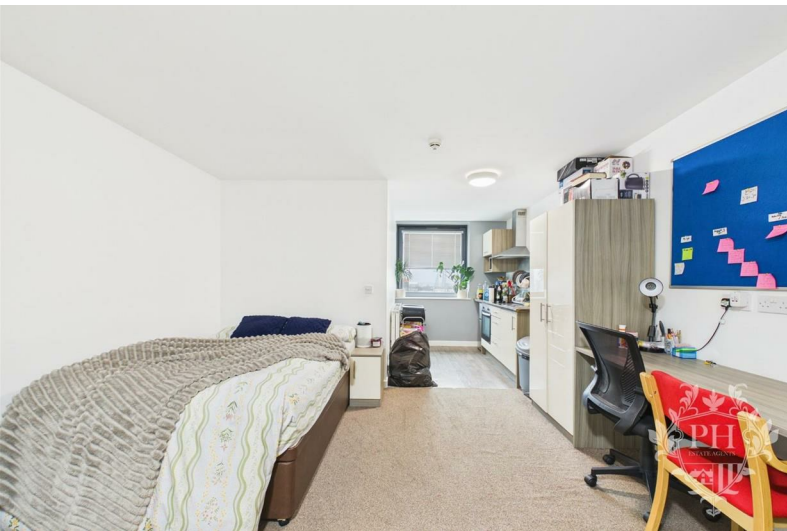




## 5-34 Rede House Corporation Road

, TS1 1LY

£30,000



# 5-34 Rede House Corporation Road

, TS1 1LY

£30,000



## BUILDING DETAILS

Situated in the dynamic heart of Middlesbrough, Rede House presents a compelling investment prospect for those looking to secure consistent rental income in the thriving student accommodation sector. This well-appointed one-bedroom student flat offers a turnkey investment with an assured tenancy, delivering a dependable revenue stream through to the conclusion of the academic year in 2025.

Positioned within easy reach of local universities and essential amenities, Rede House remains highly desirable among students, ensuring strong demand and sustained occupancy throughout the year. This consistent appeal makes it a strategic choice for investors seeking to capitalize on the resilient student rental market.

Designed with modern student living in mind, the flat features a thoughtfully arranged interior, including a comfortable bedroom, a practical kitchenette, and a welcoming living space—all crafted to provide a convenient and stylish residence.

Currently tenanted and generating rental income, this property offers a straightforward investment experience with minimal management obligations. The secured tenancy agreement guarantees steady earnings until the end of the 2025 academic year, delivering both

financial stability and peace of mind.

Beyond the apartment itself, Rede House boasts an array of student-focused amenities, including communal lounges, designated study spaces, and professional on-site management services. These facilities enhance the living experience and further strengthen the property's appeal among tenants.

Ideal for seasoned investors expanding their portfolio or newcomers seeking a reliable passive income opportunity, Rede House stands out as a prime investment in Middlesbrough's growing student housing market. With its sought-after location and secure tenancy, this property offers both immediate returns and long-term growth potential.

## BUILDING ENTRANCE

Step into luxury through the building's sophisticated entrance system. The ground floor welcomes you with not one, but two sleek key fob-secured doors, each adding a layer of safety and exclusivity. Beyond these, you'll discover a reception area where plush seating invites residents to linger, and a dedicated post collection point ensures convenience. The journey to your apartment continues through another secure door, where a smooth, modern elevator whisks you upward to your private sanctuary. This thoughtfully designed access

Tel: 01642 462153

sequence perfectly balances security with style, creating an impressive arrival experience that sets the tone for upscale living.

## STUDIO

13'1" x 19'4" (3.99m x 5.89m)

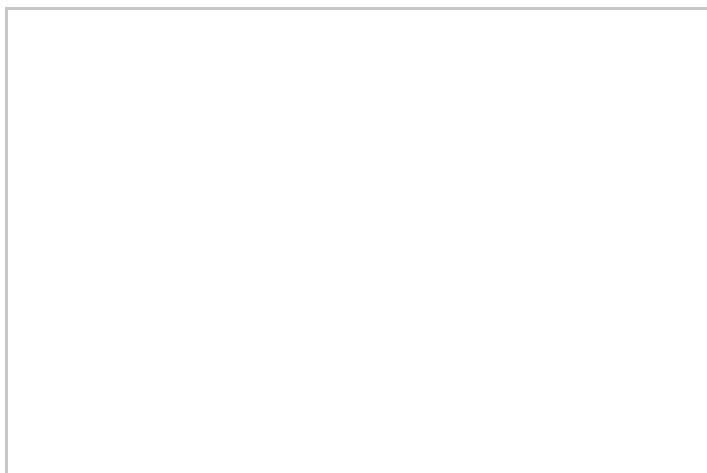
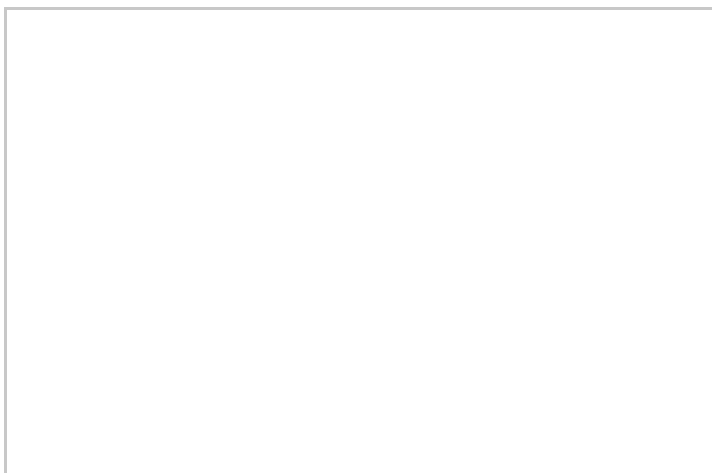
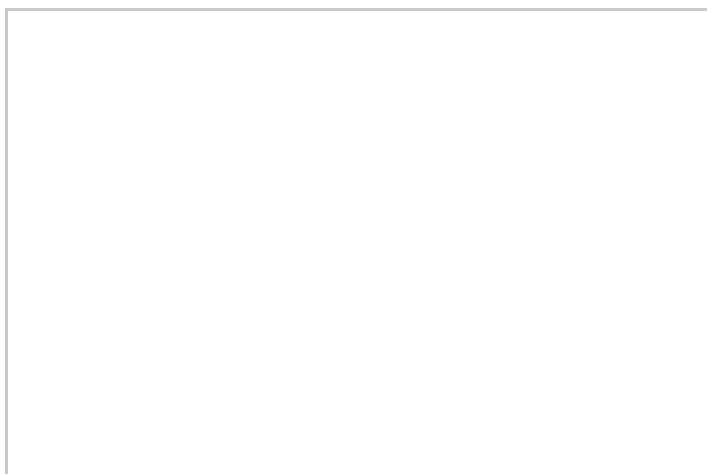
Step through a solid fire door and into the heart of this studio apartment, where a sleek, contemporary kitchen greets you. The kitchen features a built-in electric oven and a glass-ceramic hob, set against clean modern cabinetry, with plenty of room left for your favorite free-standing appliances. Move further in, and the space opens up, offering a cozy nook perfectly sized for a double bed, along with just enough built-in storage to keep your essentials tidy. A large UPVC window lets in natural light and gives you a clear view of the street outside, drawing your eye beyond the apartment's walls. Off the main living area, you'll find the bathroom, easily accessible and designed for convenience.

## SHOWER ROOM

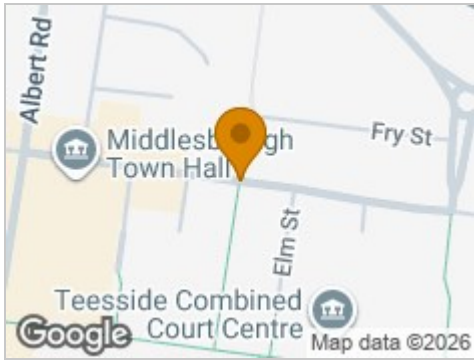
3'10" x 7'3" (1.17m x 2.21m)

The shower room features a well-appointed three-piece suite, including a sleek, glass-enclosed shower cubicle fitted with a modern thermostatic shower for precise temperature control. A stylish hand basin sits beneath a wall-mounted mirror, offering plenty of space for daily routines, while the low-level W.C. blends seamlessly into the room's design. Completing the space is a contemporary radiator, ensuring the room remains warm and comfortable year-round.

## IMPORTANT INFORMATION



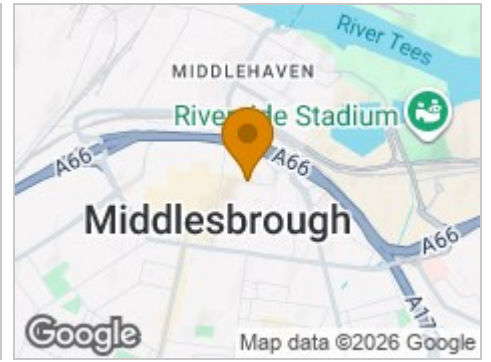
## Road Map



## Hybrid Map



## Terrain Map



## Floor Plan



## Viewing

Please contact our Middlesbrough Office on 01642 462153 if you wish to arrange a viewing appointment for this property or require further information.

## Energy Efficiency Graph



These particulars, whilst believed to be accurate are set out as a general outline only for guidance and do not constitute any part of an offer or contract. Intending purchasers should not rely on them as statements of representation of fact, but must satisfy themselves by inspection or otherwise as to their accuracy. No person in this firm's employment has the authority to make or give any representation or warranty in respect of the property.